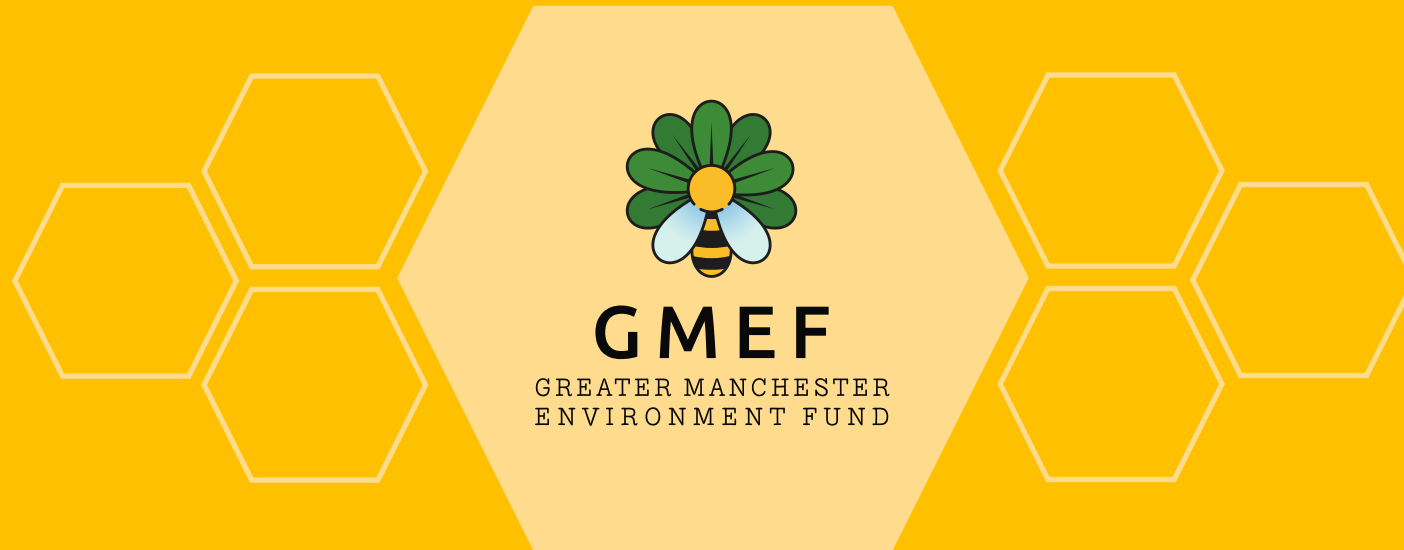


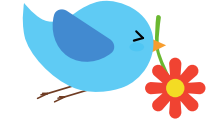
Greater Manchester Environment Fund



Investing in Greater Manchester's Natural Environment



THE GREATER MANCHESTER ENVIRONMENT FUND



The need to develop and set up a way of bringing together different funding sources to deploy into GM's natural environment was identified in the 5YEP.

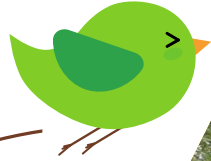
The Greater Manchester Environment was established a year later in 2020 and has developed and grown since then.

GMEF is the biggest city region-based investment opportunity for nature in the UK. It is the first of its kind.

Acting as a central funding source for projects, funds and investment will:

- **Transformational impact,**
- **Demonstrate value for money,**
- **Bring benefits to all involved.**





THE GREATER MANCHESTER ENVIRONMENT FUND

Success So Far

- Co-ordinating GM-wide partnership bids to ensure a joined up approach - **£1.8million** secured through the Green Recovery Challenge Fund **that enabled organisations to lever in a further £15.8million**
- **Providing a platform** for non-profit organisations to raise funds through corporate sponsorships, online public donations and philanthropy – Enterprise Rent-A-Car and Auto Trader were the first to donate!
- **Grant distribution** – managing over £3million through the Green Spaces Fund and Recycle 4 Greater Manchester Community Fund – supporting 137 groups so far
- £199,876 secured to develop **Biodiversity Net Gain investment models, Carbon Off-setting schemes**, and other investment opportunities.

WHY GMEF?

With a transformational impact for 3 million people

We are empowering local groups to take action for our greenspace and net zero targets.

Quality biodiverse rich green space is crucial for everyone:

- Mental Health
- Physical Activity
- Social
- Community cohesion
- Employability
- Clean Air
- Flood Management
- Water Quality
- Carbon savings
- Active Travel Networks



SCALING UP PHILANTHROPIC GRANTS THROUGH COLLABORATION

Increasing biodiversity, green jobs and accessible green spaces

By working **strategically and collaborating**, we can bring in significant funding to enable change at scale.

Within the first 6 months of establishment, GMEF worked with 9 partners to secure **£1.8 million through the Green Recovery Challenge Fund**.

Within the next 12 months **948 hectares** were improved on the most strategic and high priority green spaces as defined through our Local Nature Recovery Strategy.

This work created **30 jobs, 10 traineeships, 31 accessible greenspaces improved, and engaged 5530 days of in-kind support** provided by valued volunteers. For all of our partners the Fund was a springboard to securing more funds – a total **£18,700,000** secured for projects to continue.

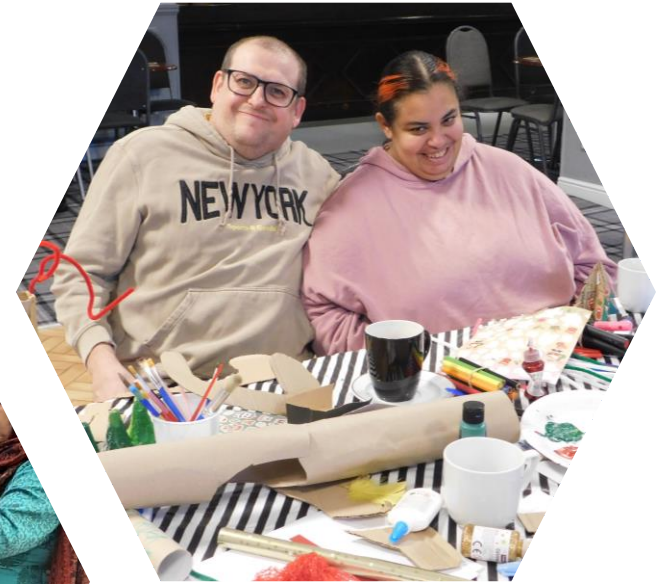


GRANT DISTRIBUTION

Our Current Funding Programmes:

- Recycle 4 Greater Manchester Community Fund
- The Greater Manchester Green Spaces Fund

See Annex for further details



Green Spaces Fund

- The £2.6m Greater Manchester Green Spaces Fund supports community-led projects that increase the amount and quality of accessible, nature rich green space in the city region, particularly in the areas where people need it most.
- **Funded by the GMCA**
- **Managed by GMEF**
- **Four rounds of applications complete**

- Two types of grant sizes:
 - Small grants £2,000 up to £15,000
 - Large grants between £15,000 to £40,000



**GREATER
MANCHESTER**
DOING THINGS DIFFERENTLY FOR THE ENVIRONMENT



GMEF

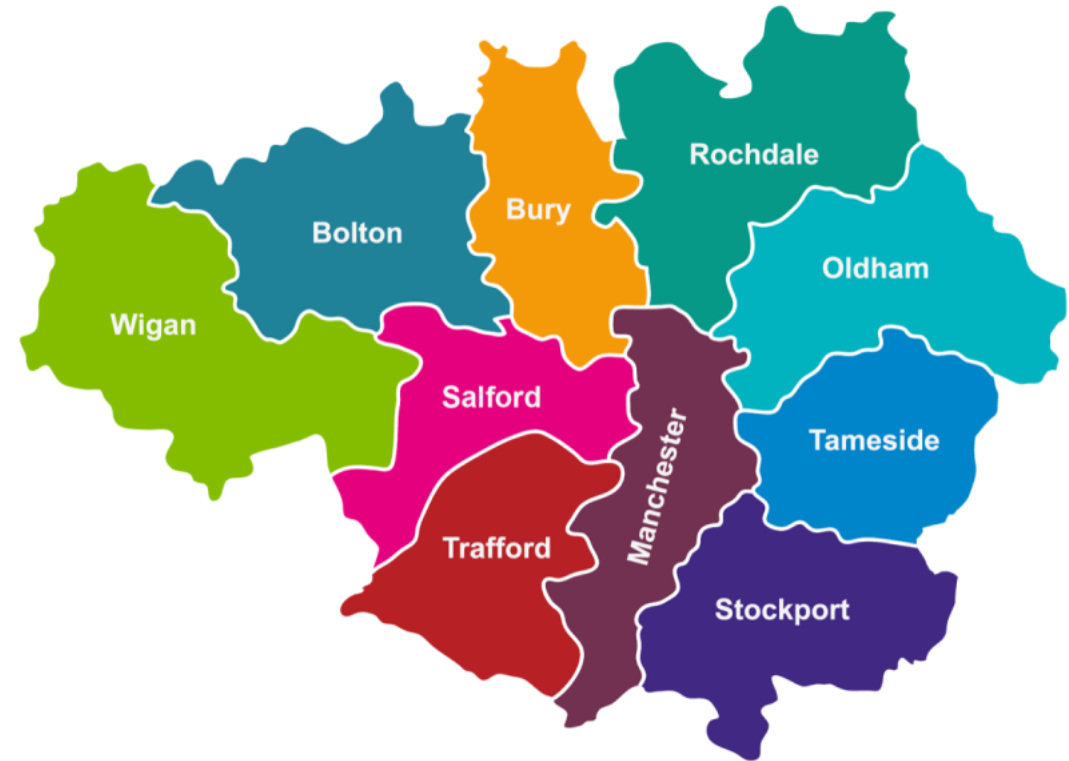
GREATER MANCHESTER
ENVIRONMENT FUND



Green Spaces Fund – Districts

Project locations Round 1 – Round 4

District	Projects
Bolton	8
Bury	5
Manchester	20
Oldham	11
Rochdale	6
Salford	8
Stockport	5
Tameside	5
Trafford	7
Wigan	4
Multi district	7



Over £2 million has been awarded

The benefits for GM

- 86 projects funded
- £795,709 of match funding brought into projects
- 84,141m2 of green space to be created
- 411,141m2 of green space to be enhanced
- 7,557 of trees to be planted
- 10,215 people volunteering and being trained



**GREATER
MANCHESTER**
DOING THINGS DIFFERENTLY FOR THE ENVIRONMENT



GMEF

GREATER MANCHESTER
ENVIRONMENT FUND



BNG AND CARBON PRODUCTS

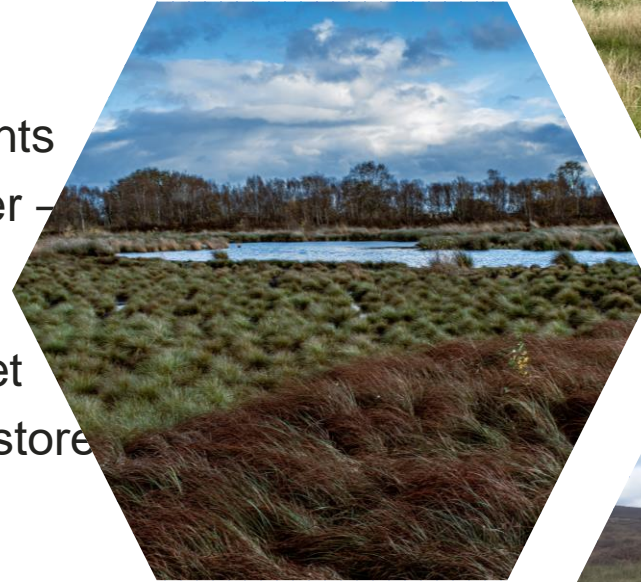
Playing a pivotal role in Greater Manchester's ambition of net zero by 2030

There is huge potential for innovative Green Finance:

Biodiversity Net Gain for new development will become mandatory by November 2023. It is part of a set of tools aimed at reversing the decline in biodiversity. This presents opportunity to fund nature recovery in Greater Manchester – **potentially £5-6m per year from BNG offsetting**

Carbon Offsetting can support companies to become net zero. Peatlands are the world's largest terrestrial carbon store. However, it needs to be managed as peatland to have a positive impact on nature, climate and communities.

GMEF and its delivery partners are seeking to restore these peatland through the sale of voluntary carbon credits to local businesses on a pathway to net-zero. Greater Manchester supports 17,500 ha of peatland, much of which is highly degraded. The potential for **improvements could capture 140,000 tones of carbon alone.**



WHY SHOULD CORPORATES AND FUNDERS DONATE THROUGH GMEF?

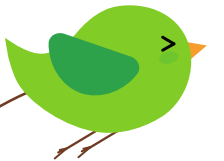
We are...

- Connected to decision-makers in Greater Manchester, benefiting from strong partnerships with influential organisations.
- Actively involved in strategic biodiversity projects, improvements to quality green spaces and creation of green jobs.
- Transforming the lives of 3 million people across the city region.

Linked to local projects that address the biggest needs in our communities



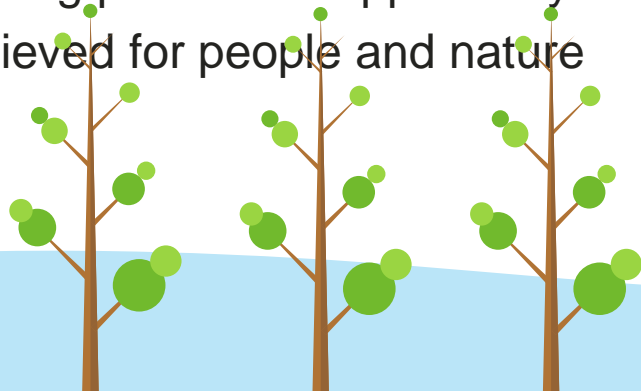
**Unlocking
opportunities for
real
transformational
change.**

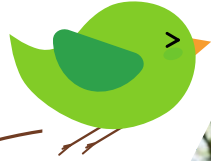


THE GMEF OFFER

GMEF offers transparency, value for money, and ensures funds are spent in the right places, as well as:

- Providing bespoke funding opportunities to meet CSR commitments whether that's social, climate or biodiversity.
- Helping to demonstrate commitment to initiatives such as the Race to Net Zero
- Providing reassurance that precious funds are distributed to the greatest strategic priorities, aligned to evidence of need.
- Acting as a broker for Corporate volunteering days, to help support the communities where businesses are located.
- Raising profile and opportunity to celebrate the benefits achieved for people and nature





NEXT STEPS

What we are doing next:

- Further development to bring BNG and Carbon Offsetting to sale. Build sales to a level where staffing is sustainable and profit generated can be re-distributed back into natural environment projects.
- Approaches to those who may be interested in providing donations for accessible Green Spaces
- Aligning funds to maximise potential for natural environment improvements eg carrier bag charges, disposable coffee cup grant scheme, water and waste / landfill taxes, enforcement undertakings.
- Championing the impact of the Green Spaces Fund for continued commitment beyond May 2023

RECOMMENDATIONS

- Note the progress in the establishment, development and growth of the Greater Manchester Environment Fund to date.
- Provide feedback on the routes to growing the Greater Manchester Environment Fund further, particularly in the routes to securing the contributions from the private sector into initiatives such as the Green Spaces Fund.